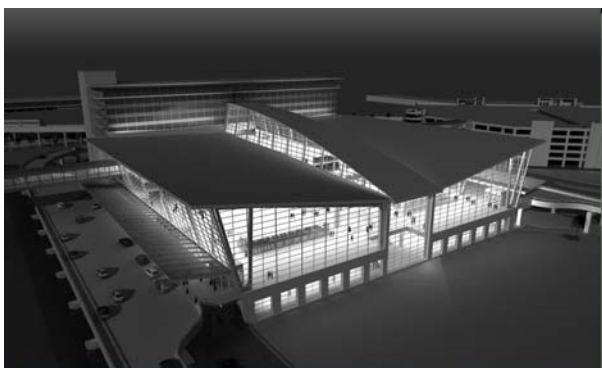


AIRMAIL

June 23, 2006

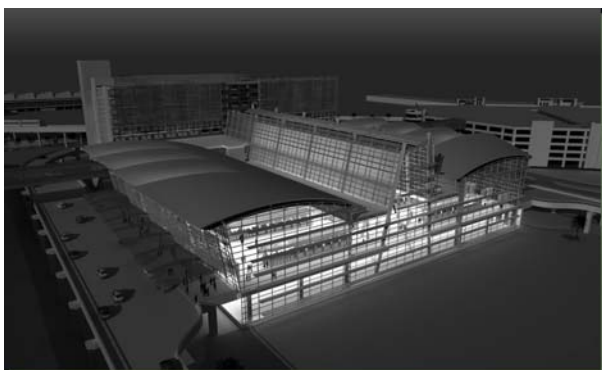
NEWS FROM ABOVE



Terminal
Design
Concept
#1



Terminal Design Concept #2



Terminal
Design
Concept
#3

Visit www.sacairports.org and click on "Planning and Development" for more information on the Master Plan and the Terminal Modernization Program.

Public Invited to Review New Terminal Designs

Sacramento County Airport System (SCAS) continues to work on the 20-year Master Plan for Sacramento International Airport. The Master Plan includes the construction of a new central terminal building to replace the existing Terminal B. Consultants and SCAS staff recently presented three design concepts for the new terminal to the Sacramento County Board of Supervisors.

The designs offer three distinct architectural themes. Each one features a two-level roadway, a hotel and an automated people mover to transport passengers from the terminal to their departure gates.

"The new terminal will be designed to make Sacramento International Airport a unique landmark for our region," said Director of Airports Hardy Acree, "as well as providing an easy and convenient airport experience for Northern California travelers."

Members of the public are invited to comment on the three design concepts at one of two upcoming workshops:

Date: Wednesday, June 28
Times: 2 p.m. to 4 p.m. or
5 p.m. to 7 p.m.
Place: KVIE Television Studios
2595 Capitol Oaks Drive in South Natomas

AirMail is published by the
SACRAMENTO COUNTY
AIRPORT SYSTEM

G. Hardy Acree
Director of Airports

Cheryl Marcell
Deputy Director, Marketing & PR

Karen Doron - Editor

BOARD OF SUPERVISORS
Roger Dickinson, District 1
Illa Collin, District 2
Susan Peters, District 3
Roberta MacGlashan, District 4
Don Nottoli, District 5

County Executive
Terry Schutten

Wolfgang Puck Kiosk Open at SMF

A new grab and go kiosk recently opened at Sacramento International Airport. The new eatery features sandwiches, salads and other items inspired by famed chef Wolfgang Puck. One feature item available is the signature Chinois salad.

Located on the first floor of Terminal B-2, the kiosk is open to all passengers and visitors. Opened in response to the recent move of JetBlue Airways from Terminal A to Terminal B, the cart is a terrific option for passengers who need to grab a quick bite. The Wolfgang Puck cart is open between the hours of 6 a.m. and 11p.m



Flight Numbers		April 2006	April 2005	Last 12 Months 2006	Last 12 Months 2005
Passenger traffic at Sacramento International Airport for the past was up 4.5% in April 2006 compared to April 2005.	International Airport				
	Passengers	863,109	826,318	10,262,396	9,855,924
	Air Freight (Tons)	5,964	5,839	68,227	64,758
	Aircraft Operations	13,811	13,596	170,866	161,999
	Executive Airport				
	Aircraft Operations	8,418	8,473	119,508	108,620
	Mather Airport				
	Air Freight (Tons)	4,515	4,646	64,455	62,607
	Aircraft Operations	6,332	6,820	88,084	80,582

Flight Numbers		May 2006	May 2005	Last 12 Months 2006	Last 12 Months 2005
Aircraft Operations at Executive Airport were up 4.2% year-to-date in May 2006 compared to May 2005.	International Airport				
	Passengers	911,344	909,823	10,263,917	9,924,571
	Air Freight (Tons)	6,000	5,636	68,590	65,100
	Aircraft Operations	16,421	14,122	173,165	162,314
	Executive Airport				
	Aircraft Operations	10,573	11,074	119,007	108,026
	Mather Airport				
	Air Freight (Tons)	4,798	4,846	64,407	62,532
	Aircraft Operations	6,917	7,301	87,700	80,775

Happy Independence Day! Remember: fireworks are not allowed on aircraft. For more information on prohibited items, please visit www.tsa.gov.